

# SES SCUTTLE HOLE COVER



- *Reflects 97% of Radiant Heat*
- *Insulates & Air Seals Attic Access*

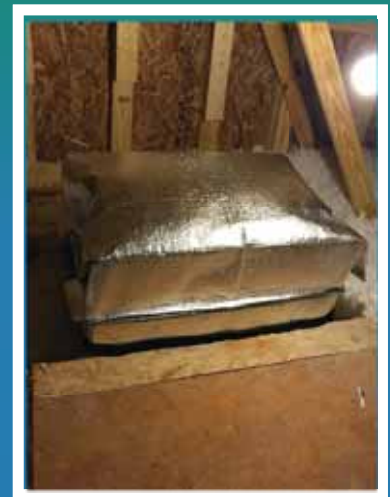
- *Quick Installation*
- *Easy Zipper Access to Attic*



*Meets and Exceeds Code Requirements for All Climate Zones*



*Don't Let Your Hard Earned Money Slip Through The Cracks!*



**EASY TO INSTALL WITH A THERMAL VALUE UP TO R-58**

*Please Refer to Back for R-Value Chart*

**SOUTHEAST ENERGY SOLUTIONS**



*Reflective Insulation Supplied By:*



**MADE IN THE USA**

**US PATENT PENDING**

*See Reverse Side for Installation Instructions  
or visit our website at [www.southeastenergy.solutions](http://www.southeastenergy.solutions)*

# SES SCUTTLE HOLE COVER

## *Economical Solution for Immediate Energy Savings!*

### **BENEFITS OF SES SCUTTLE HOLE COVER**

- Increase Energy Savings
- Non-toxic
- Excellent vapor barrier
- Installs easily with Crown stapler or hammer
- Superior thermal performance
- Flexible and durable
- Improves insulation system performance
- Great for new construction or retrofits
- Reflects up to 97% of radiant heat
- Simple installation and heavy duty zipper allows for easy attic access.
- Insert insulation batt into pocket and close the Velcro tab
- Excellent air sealing to keep out harmful attic pollutants
- **Insulation insertion and Installation video clips are on the website**



**PRODUCT DIMENSIONS & DESCRIPTIONS:** Double sided scrimmed aluminum foil laminated to polyethylene foam (1/4" nominal thickness)

**CORE MATERIAL:** Polyethylene

**FACINGS AVAILABLE:** Foil/Foil

**FLAME AND SMOKE:** ASTM E-84

**FLAME SPREAD:** Less than 25, **SMOKE DEVELOPED:** Less than 50

**FULL SCALE FIRE TEST:** NFPA 286 - Foil/Foil Passed

**R-VALUE:** Up to R-9 with current application\*

**PERM RATING:** E-96 - .008

**WARNING:** Although Insulation Products are all fire tested to ASTM and/or NFPA standards; it is recommended that they or any insulation material should not be exposed to open flame or other ignition sources of sufficient intensity during shipment, storage or installation.

Southeast Energy Solutions, Inc.

[www.southeastenergy.solutions](http://www.southeastenergy.solutions)

Email: [info@southeastenergy.solutions](mailto:info@southeastenergy.solutions)



#### **ASTM C518 - Testing**

Provided By:

R & D Services

P.O.Box 2400

Cookeville, TN 38502-2400

#### **ASTM E-283 Air Leakage:**

Results (1.44 cfm/ft2)

Reference 2015 IECC/IRC,

Section R402.4.5/N1102.4.5

#### **E-283 Testing provided by:**

Intertek Architectural

Testing

130 Derry Court

York, PA 17406

#### **Overall R-Value for the Insulation Assembly with Low-Emittance Surfaces**

<u>Insulation</u>	<u>Heat Flow Down (summer)</u>	<u>Heat Flow-Up (winter)</u>
13	22.1 (18.5)	15.6 (14.9)
19	28.1 (24.5)	21.6 (20.9)
21	30.1 (26.5)	23.6 (22.9)
30	39.1 (35.5)	32.6 (31.9)
38	47.1 (43.5)	40.6 (39.9)
49	58.1 (54.5)	51.6 (50.9)

\*Numbers in parantheses are for upper surface covered with dust, fibers, or other particulate material. The upper surface can be cleaned.



\* Can custom make to any size.

Full size knee wall attic access door sizes are available