

PULLDOWN LADDER JACKET

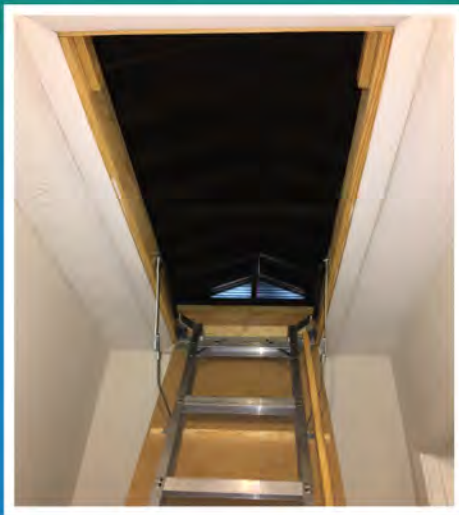


- *Reflects 97% of Radiant Heat*
- *Insulates & Air Seals Attic Access*

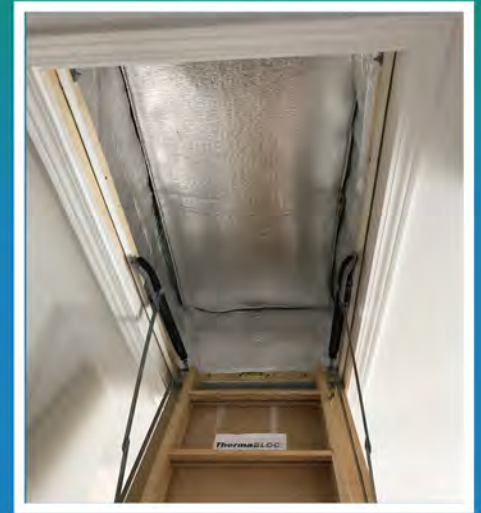


- *Quick Installation*
- *Easy Zipper Access to Attic*

Meets and Exceeds Code Requirements for All Climate Zones



Don't Let Your Hard Earned Money Slip Through The Cracks!



EASY TO INSTALL WITH A THERMAL VALUE UP TO R-58

Please Refer to Back for R-Value Chart

SOUTHEAST ENERGY SOLUTIONS



LISTED PRODUCT



US PATENT #9,695,630

See Reverse Side of Label for Installation Instructions or visit our website at www.southeastenergy.solutions

MADE IN THE USA

Pulldown Ladder Jacket

Economical Solution for Immediate Energy Savings!

BENEFITS OF PULLDOWN LADDER JACKET:

- Increase Energy Savings
- Non-toxic
- Excellent vapor barrier
- Installs easily with Crown stapler or hammer
- Superior thermal performance
- Flexible and durable
- Improves insulation system performance
- Great for new construction or retrofits
- Reflects up to 97% of radiant heat
- Simple installation and heavy duty zipper allows for easy attic access.
- Insert insulation batt into pocket and close the Velcro tab
- Excellent air sealing to keep out harmful attic pollutants
- **Insulation insertion and Installation video clips are on the website**



PRODUCT DIMENSIONS & DESCRIPTIONS: Double sided scrimmed aluminum foil laminated to polyethylene foam (1/4" nominal thickness)

CORE MATERIAL: Polyethylene

FACINGS AVAILABLE: Foil/Foil

FLAME AND SMOKE: ASTM E-84

FLAME SPREAD: Less than 25, **SMOKE DEVELOPED:** Less than 50

FULL SCALE FIRE TEST: NFPA 286 - Foil/Foil Passed

R-VALUE: Up to R-9 with current application*

PERM RATING: E-96 - .008

WARNING: Although Insulation Products are all fire tested to ASTM and/or NFPA standards; it is recommended that they or any insulation material should not be exposed to open flame or other ignition sources of sufficient intensity during shipment, storage or installation.

Southeast Energy Solutions, Inc.

www.southeastenergy.solutions

Email: info@southeastenergy.solutions

ASTM C518 - Testing

Provided By:

R & D Services

P.O.Box 2400

Cookeville, TN 38502-2400

ASTM E-283 Air Leakage:

Results (1.44 cfm/ft2)

Reference 2015 IECC/IRC,

Section R402.4.5/N1102.4.5

E-283 Testing provided by:

Intertek Architectural

Testing

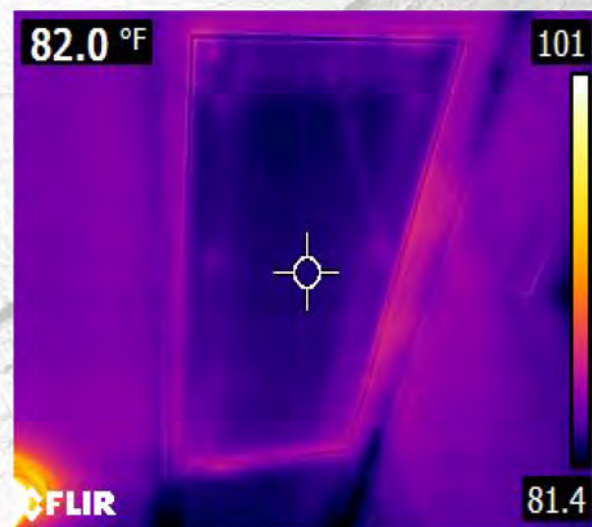
130 Derry Court

York, PA 17406

Overall R-Value for the Insulation Assembly with Low-Emittance Surfaces

<u>Insulation</u>	<u>Heat Flow Down (summer)</u>	<u>Heat Flow-Up (winter)</u>
13	22.1 (18.5)	15.6 (14.9)
19	28.1 (24.5)	21.6 (20.9)
21	30.1 (26.5)	23.6 (22.9)
30	39.1 (35.5)	32.6 (31.9)
38	47.1 (43.5)	40.6 (39.9)
49	58.1 (54.5)	51.6 (50.9)

*Numbers in parantheses are for upper surface covered with dust, fibers, or other particulate material. The upper surface can be cleaned.



- * Can custom make to any size.
- * We have Scuttle hole/Attic hatch covers
- * Full size knee-wall access door sizes are available